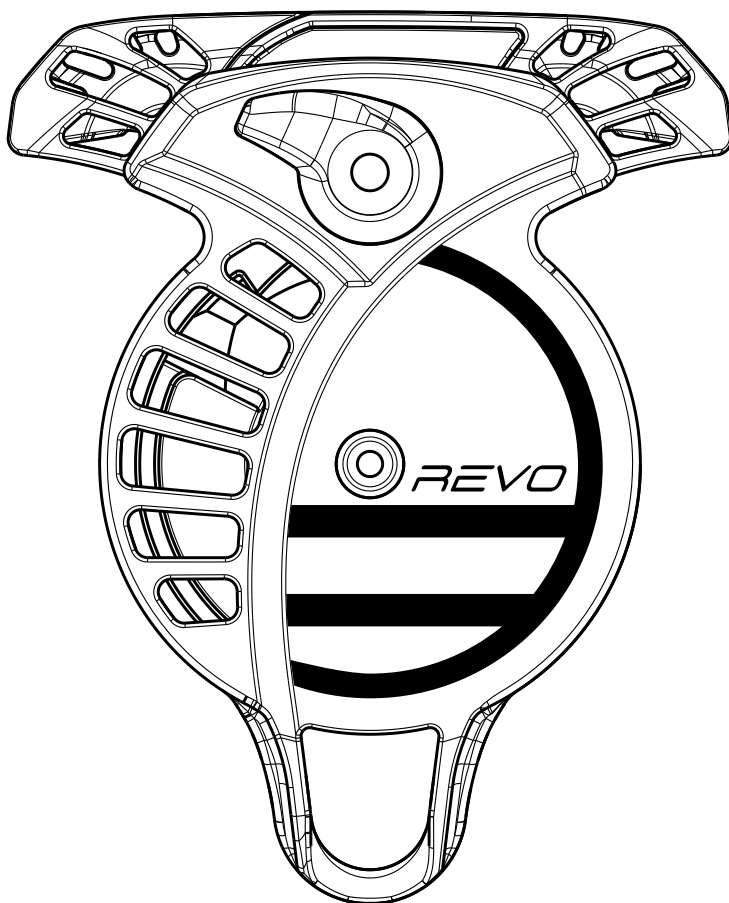




WILDCOUNTRY

REVO

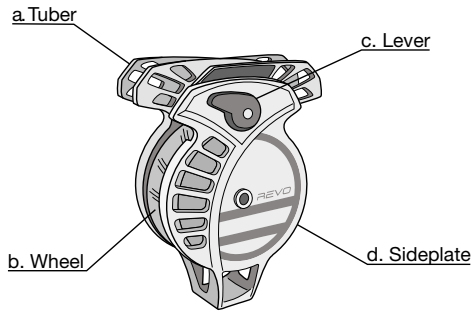
User Manual



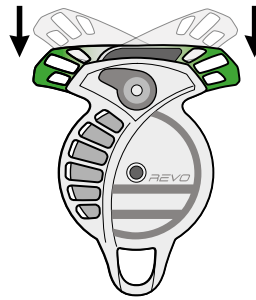
I. How to Use This Product

See section III for supporting text.

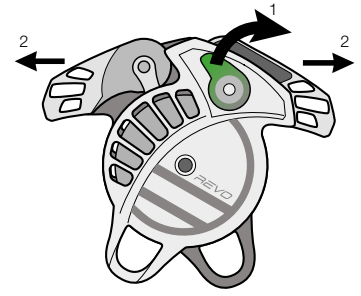
1 Components



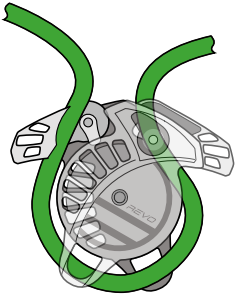
2.1 Home Position



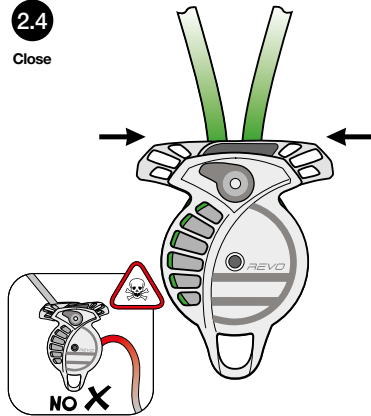
2.2 Open



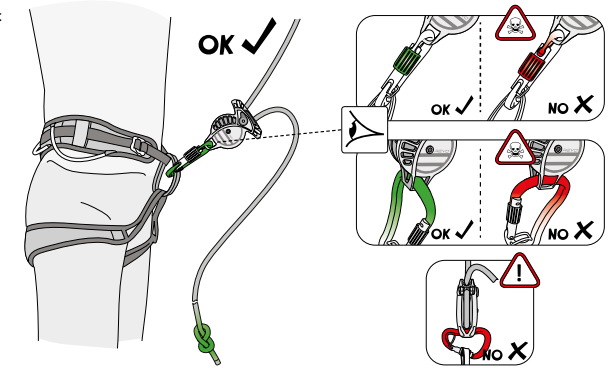
2.3 Loading the rope



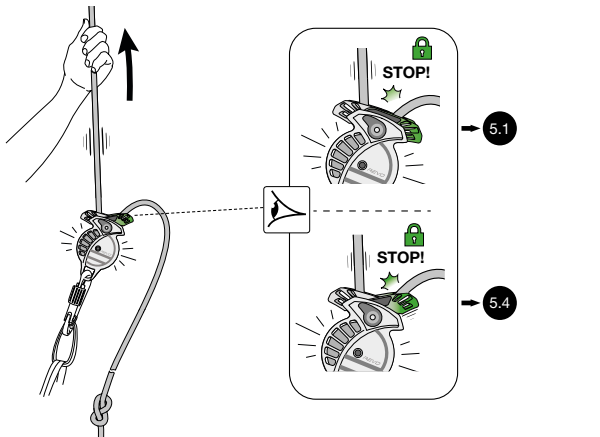
2.4 Close



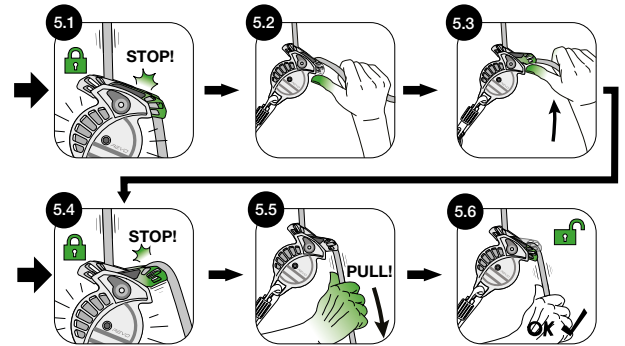
3 Correct setup



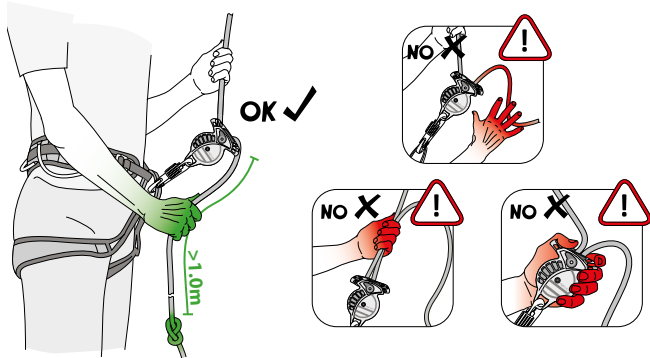
4 Pre-climb test



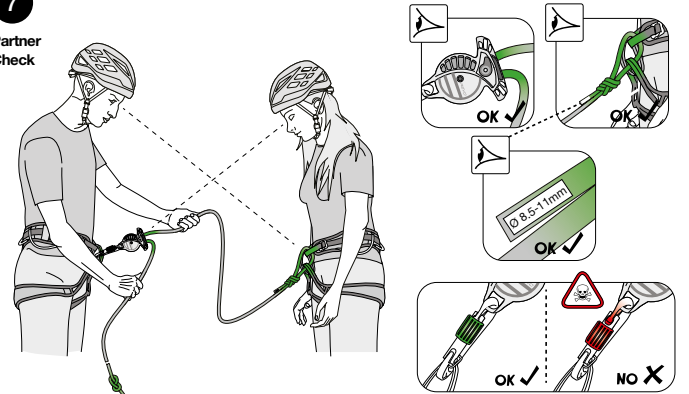
5 Releasing a locked REVO



6 Default belaying position

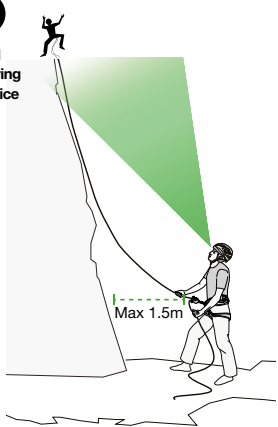


7 Partner Check



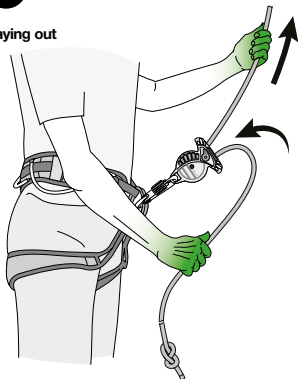
8

Good Belaying Practice



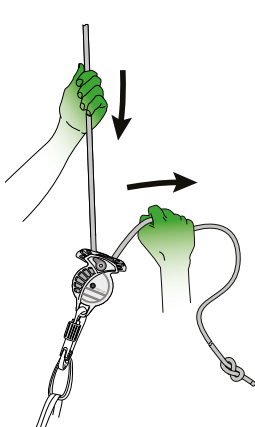
9

Paying out



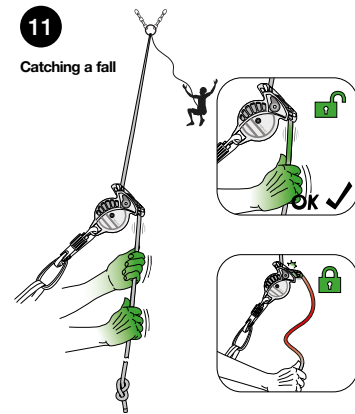
10

Taking in



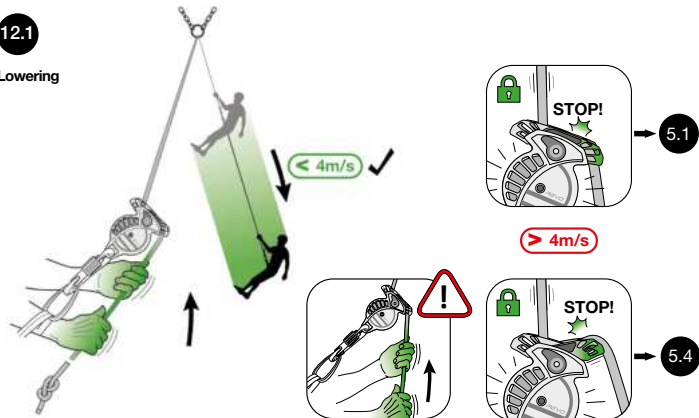
11

Catching a fall



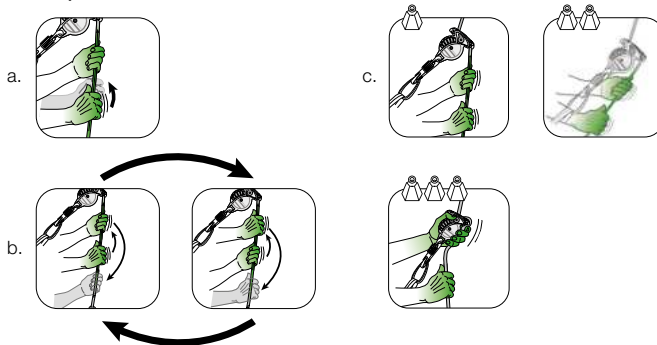
12.1

Lowering



12.2

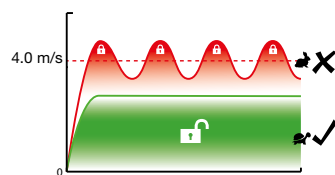
Lowering Technique



Breaking Power

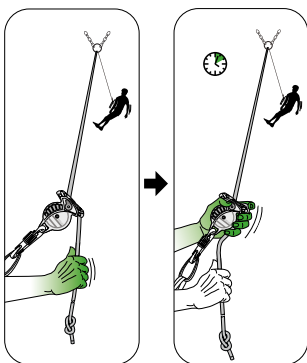
12.3

Lowering Speed



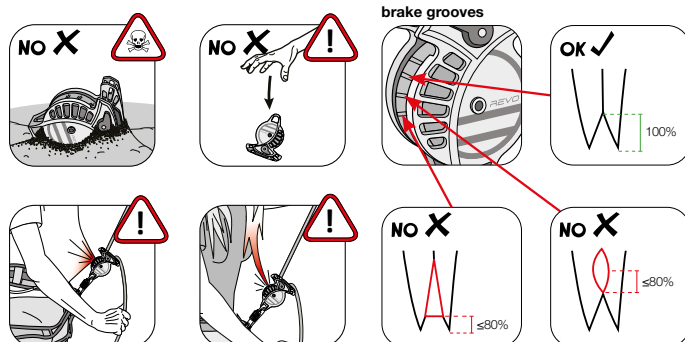
13

Resting



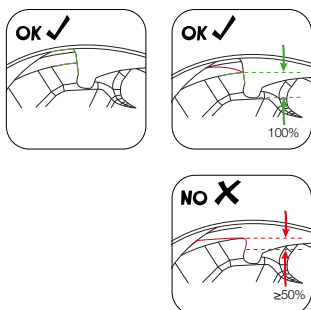
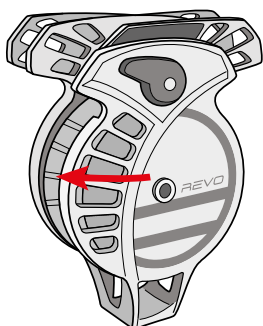
14

Warnings



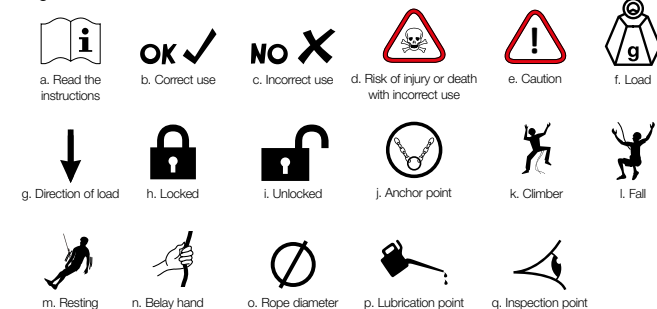
Inspection brake grooves

Inspection locking mechanism



15

Pictograms



II. Product Overview

INTRODUCTION

The REVO is the first BI-DIRECTIONAL assisted locking belay device: its function is independent from the loading orientation of the rope, thus eliminating one of the most common causes of belay related accidents. Irrespective of the situation, an uncontrolled descent will cause the INERTIA REEL to activate, grip the rope and arrest the fall. The innovative PANIC-PROOF RELEASE MECHANISM (pat. pending) removes the necessity for a handle to unlock the system when lowering the climber. The device is INTUITIVE to use like a traditional belay plate and is thus suited for both the novice and expert alike. The clever combination of these features makes the REVO the SAFEST BELAY DEVICE on the market.

TECHNICAL EXPLANATION

The REVO wheel locks at around 4m/s which enables slack to be given and climbers lowered at a normal speed. Providing you have an attentive belayer (minimal slack in the system) the REVO wheel will lock within one REVOLUTION (less than 10cm) meaning a maximum fall of 1.1m (not including rope stretch). When the wheel reaches a high enough speed, 4m/s, the sprung loaded shoe engages with the tuber 'jaw', which rotates and locks into the wheel. The wheel is prevented from rotating, and the friction of the ribs on the wheel holds the rope in place. Pulling the rope back onto the tuber 'jaw' will release the wheel whilst retaining control with the belay hand. Be aware that if the REVO does not lock it is because you are doing your job as a belayer and controlling the rope correctly.

FUNCTIONALITY

REVO complies to the European Norm EN15151-1 : 2012 and has been developed for mountaineering and climbing. It is suitable for all levels of belaying; for beginners it teaches the best belay technique (always keeping a hand on the brake end of the rope) which can be applied to a traditional belay plate at a later date, with the added security of the locking function. The REVO makes it very simple to give & take in slack and for experts offers an additional level of safety without affecting their usual belay method.

TOP ROPE CLIMBING

The REVO is suitable for top roping both indoors and outdoors, pay attention for the entire climb (especially during the first few metres above the ground) ensuring the rope is taught to negate the effects of rope stretch and to ensure the REVO locks immediately if control is lost.

LEAD CLIMBING

The REVO is suitable for lead climbing using leader placed protection or in situ gear/ bolts as it functions like a normal belay plate allowing for a 'dynamic' belay technique. However if the speed of the rope exceeds 4m/s or control is lost the REVO will lock automatically.

MULTI-PITCH CLIMBING

The REVO can be used for multi pitch climbing by experts but it is not its primary function. When bringing up the second from above you must control the rope at all times with the belay hand, ensuring the weight of the rope does not cause slack to be given by accident.

ABSEILING

The REVO can be used for abseiling on a single rope, be aware that should the mechanism lock during the abseil descent (because the descent speed exceeds 4m/s) the weight of a hanging rope can cause the REVO to unlock. You should maintain control of the descent with the belay hand at all times.

III. How to use this product

The Revo has to lock and block the rope, otherwise please do not use it. It must be free from cracks, dirt, deformation, markings, corrosion and play. The product must not have been modified and no components must be missing. Please check before and during each use that it is faultless. For guidance on how to use this product refer to the diagrams in section I and the following text. Neither should be interpreted in isolation; furthermore these instructions cannot be substituted for comprehensive instruction by trained and competent persons.

1. COMPONENTS

a. Tuber, b. Wheel, c. Lever, d. Sideplate

2.1. HOME POSITION

Ensure both tubers are in the unlocked (down) position

2.2. OPEN

Twist the lever upwards and open the REVO

2.3. LOADING THE ROPE

Insert rope into REVO

2.4. CLOSE

Close the device ensuring both rope ends are protruding from the top

3. CORRECT SETUP

- Knot in end of rope
- Karabiner (EN12275 Type H - LOCKING or Type B - LOCKING) is through belay loop and locked
- Karabiner inserted through REVO in correct orientation
- Karabiner is not cross-loaded

4. PRE-CLIMB TEST

- Pull aggressively upwards on the live rope, do not grip the brake end of the rope
- The REVO should lock and block the rope

5. RELEASING A LOCKED REVO

There are two "locked" scenarios; 5.1 & 5.4. If locked in scenario 5.1 perform steps 5.2 & 5.3 to reach 5.4 before continuing.

- 5.1 – REVO locked, tuber not activated, rope blocked
- 5.2 – Push tuber up with thumb while keeping a hand on the brake end of the rope
- 5.3 – Tuber activated
- 5.4 – REVO locked, tuber activated, rope blocked
- 5.5 – Pull on brake end of the rope to lower the tuber and unlock REVO
- 5.6 – REVO unlocked, resume active use

6. DEFAULT BELAYING POSITION

- Always keep a hand on dead rope
- Greater than 1m of dead rope
- Knot at end of rope

7. PARTNER CHECK

- Rope inserted into REVO correctly
- Knot in end of dead rope
- Climber tied in with suitable knot through harness tie in points
- Harness sits correctly and is closed
- Rope diameter between 8.5-11mm
- Connecting karabiner is locked

8. GOOD BELAYING PRACTICE

- Always looking up at climber
- Stand close to the wall
- Minimal slack in the system

9. PAYING OUT

Pull upwards on live rope, keep hand on dead rope --> Bring rope in your break hand towards the device and pull upwards accordingly to pay out

10. TAKING IN

Pull down on live rope and horizontally on dead rope

11. CATCHING A FALL

- Grip brake end of the rope bringing hand(s) down and towards your body, the REVO will not lock if you belay correctly
- If you fall your job as a belayer i.e. there is too much slack on the brake end of the rope then the REVO contains a backup mechanism and will lock at 4m/s.

12.1. LOWERING

- Grip dead rope with both hands
- Lower climber, keep speed less than 4m/s
- If over 4m/s the REVO will lock
- keep dead rope close to your body in order to maximise the tuber's friction

12.2. LOWERING TECHNIQUE

Use either:

- 12.2-a – Allow rope to slide through top hand while gripping with bottom hand
- 12.2-b – Hand over hand technique to lower climber

12.3. LOWERING SPEED

- Lower climber smoothly with a constant speed
- Avoid sudden actions while lowering as the elasticity of the rope will amplify this effect and cause the REVO to lock.

13. RESTING

- Keep one hand on brake end of the rope
- Bring other hand to grip the REVO and rope

14. WARNINGS

- Keep REVO away from dirt
- Do not drop REVO
- Keep loose clothing away from REVO
- Keep hair tied back away from REVO

15. PICTOGRAMS

a. Read the instructions, b. Correct use, c. Incorrect use, d. Risk of injury or death with incorrect use, e. Caution, f. Load, g. Direction of load, h. Locked, i. Unlocked, j. Anchor Point, k. Climber, l. Fall, m. Resting, n. Belay hand, o. Rope diameter, p. Lubrication point, q. Inspection point.

IV. Product Instructions

GENERAL INFORMATION

This notice contains general product information only, for complete product information, see also the attached notice of information specific to this product.

Adhere strictly to the following advice and recommendations; if in doubt please contact Oberalp S.P.A. The information in these instructions is not exhaustive and cannot be substituted for comprehensive instruction by trained and competent persons. This product should only be used by trained and competent persons or the user should be under the supervision of a trained and competent person.

Climbing and mountaineering are hazardous; even correct selection, maintenance and use of the correct equipment cannot eliminate the potential for danger, serious injury or death. It is the users responsibility at all times to ensure that he or she understands the correct and safe use of any product supplied by Oberalp S.P.A.; uses it only for the purposes for which it is designed and practices all proper safety procedures. The manufacturer or supplier will not accept any responsibility for damage, injury or death resulting from misuse.

This product is made in conformity with PPE Regulation (EU) 2016/425 and with Regulation 2016/425 on personal protective equipment as brought into UK law and amended. You can view the EU and UKCA Declaration of Conformity under www.wildcountry.com. The product meets the third category for personal protective equipment (PPE). This product protects against the risk of falling during climbing and mountaineering.

GENERAL USE

This product should be used as instructed. It may be used in conjunction with any appropriate item of PPE covered by the aforementioned regulation of suitable specification with due consideration to the limitations of each individual piece of equipment and of the belay system as a whole. No alterations or markings should be made to it.

The safety that this product provides depends upon its strength, the quality of the rock anchorage used and the integrity of the belay point. The strength will be reduced through age and general wear and tear dependant upon the amount of use, see obsolescence for more details.

Be aware that this product can be damaged in a fall and consequently should always be examined for defects before reuse. If this product exhibits signs of wear or defects or if there is any doubt about its serviceability, replace it. It is recommended that any equipment involved in a serious fall should be replaced; lives may depend upon your equipment.

The user should be fully aware of the history of this product (use, storage, inspection, etc.). If this product is not for personal use (eg. used in mountaineering and rock climbing centers) we strongly recommend a systematic approach to record keeping. This should always be carried out by a competent person. In addition to the normal inspection required before use this product should be thoroughly examined at least once every three months by a competent person. If any defects are found as detailed in obsolescence or are suspected this product should be withdrawn from use immediately. The maintenance file can be downloaded from www.wildcountry.com.

GENERAL SAFETY ADVICE

Wearing a climbing helmet will help protect your head from injury if you fall. When using belay techniques we recommend the use of appropriate gloves. Foresee and take appropriate action in situations where rescue may be required.

WARNINGS

- The breaking effect of this device will vary dependent on the following factors, it is the users responsibility to assess these factors in a safe situation before use:- Rope diameter, rope slipperiness, wet rope, icy rope and other factors.
- It is the responsibility of the user to familiarise themselves with the braking effect available before each use.
- The user should carry out a pull test on the active rope before each use to verify the device is functioning correctly.
- The free end of the rope shall be controlled by hand at all times.
- It is important to check the braking device regularly for any damage during use and to withdraw from use if any damage or defect is found.
- Be aware that humidity, wet and icy conditions will potentially cause this device to malfunction or fail.
- The safe working life of this product may be as little as one use in extreme circumstances

TEMPERATURE

Always keep products made wholly or partially from textile elements below 50°C as the performance of the nylon/ Dyneema from which they are made may be affected at temperatures above this. Tests down to -40°C show no permanent change in the performance of this material although nylon/ Dyneema may stiffen while at temperatures below 0°C.

CHEMICALS AND CORROSIVE AGENTS

Avoid all contact with chemical reagents as they will affect the performance of this product (eg. vehicle battery acid, bleach, etc.). Discard this product immediately if contact has or is suspected to have occurred (the product may be permanently weakened without showing any signs). It is essential that this product is cleaned as soon as is practical after exposure to sea water or any saline environment (eg. when used on sea cliffs).

CLEANING AND DISINFECTION

First rinse the product in clean cold water of domestic supply quality. If still soiled rinse in warm water (maximum temperature 40°C) with pure soap. Thoroughly rinse and dry naturally in a warm ventilated room away from direct heat.

MAINTENANCE

This product is not user maintainable with the exception of cleaning and lubrication where relevant. Before lubrication refer to the section "cleaning and disinfection". We recommend the use of WD40 as a lubricant only. Avoid applying to surfaces which come into contact with the rope (Wheel and Tuber). Clean excess lubricant off all surfaces after application; contact Wild Country for further advice if in doubt.

STORAGE AND TRANSPORTATION

After any necessary cleaning and lubrication store the product unpacked in a cool, dark, dry, ventilated place away from sharp edges, pressure, corrosives or any possible causes of damage. Wet equipment should first be allowed to dry before storage or transportation. Care should be taken to protect this product against such risks as those detailed in obsolescence. It is recommended that a rucksack or other suitable bag or container is used during transport.

OBSOLESCENCE

This product will deteriorate over time in the course of normal use and because of this we are required by Regulation (EU) 2016/425 and Regulation 2016/426 as brought into UK law and amended to give an obsolescence date. It is difficult to be precise but a conservative estimate for this product is that it has a life span of 10 years from date of first use for metal components and 5 years from date of first use or 10 years from date of first storage for textile components. However, please note that the following factors will further reduce the safe working life of the product: Metal Components; normal use, exposure to chemical reagents, corrosion, heat contamination, high impact load during fall arrest, loading over sharp edges of rock or equipment or failure to maintain (clean and lubricate) as recommended.

Textile Components; most textile components used in safety equipment are known to degrade gradually with time even when stored in ideal conditions. Additionally normal use, rope burn, exposure to elevated temperatures, high impact load during fall arrest, prolonged exposure to UV light including sunlight, abrasion, cuts, loading over sharp edges of rock or equipment or failure to maintain (clean) as recommended will cause further reduction in strength.

PRODUCT MARKING

In addition to the instruction leaflet accompanying this product the following information is marked on the device:

REVO: Product Name

Manufacturer: Wild Country - Oberalp S.P.A.,
Via Waltraud Gebert Deeg Strasse 4, I-39100 Bozen - Italy
Ø 8.5-11.0mm: Rope compatibility



Compatible with single dynamic ropes (EN 892). Commercially stated rope diameters have a tolerance up to ± 0,2 mm. Rope diameters and other characteristics may vary with use.

Rope Orientation: Visual indication of correct placement of the rope.



Read the instructions supplied by the manufacturer.

PAT. PEND.: Patent Pending

Batch code

A 01 1701 00001

1. Internal reference _____
2. Year of manufacture (17 = 2017) _____
3. Month of manufacture (01 = Jan) _____
4. Individual serial number _____

EN15151-1: The standard with which the product complies

UIAA 129: This confirms that the product has been manufactured in accordance with the UIAA norm.

MADE IN ITALY: Country of origin



Confirms adherence to the Regulation (EU) 2016/425

2008: Notified body performing the EU type examination (module B) / Notified body controlling the manufacturing (module C2): Dolomiticert Scarl, Z.I. Villanova 7/a, 32012 Longarone (Belluno) Italy



confirms adherence to the Regulation 2016/425 on personal protective equipment as brought into UK law and amended

8503: Approved body performing the UK type examination (Module B) / Approved body controlling the manufacturing (Module C2): CertDolomiti LTD, 17 Grosvenor Street, Mayfair, London – W1K 4QG, United Kingdom

Importer: Oberalp UK LTD, Unit F1 – Intec - Parc Menai, Bangor - Wales LL57 4FG, United Kingdom

GUARANTEE

Wild Country - Oberalp S.P.A. guarantees all of its products from new against defects in workmanship or materials, unless the product has been worn out, misused or abused as determined by our examination. This guarantee is in addition to your statutory rights which remain unaffected. Wild Country - Oberalp S.P.A. reserves the right to modify without notice the design and specifications of products described in these instructions. All weights, dimensions and sizing specifications where quoted are nominal.